



6091. . -
6112289 : 2132580 :

تقرير عن نتائج البرنامج الوطني

لتقييم جودة معايرة الواسمات الورمية

2007

البرنامج الوطني لتقييم جودة معايرة الواسمات الورمية

* :
** :
* :

2007

Control

)

(chart

()

.BIAS

T.PSA

F.PSA

16

25

16

:

E-mail: Quality@aec.org.sy - 6091. . *

E-mail:scla@mail.sy - 7582. . **

				-1
				-2
				-1-2
				-2-2
				-3
				-4
				-5
				-6
				-1-6
			(A)	-2-6
			(B)	-3-6
	.RE	(Histogram)	(D)	-4-6
.T.PSA	RE			-
.F.PSA	RE			-
				-7
				-8
				-9

: -1

(1).

ISO/IES-17025:2005

(2) .

M-10 ISO/IES-17025:2005

(3) .

: -2

.% 22

(4)

65

-20

(45 -40)

(Wilm`s Tumor)

(34

Biochemical Substances

: Tumor Markers

cellular tumor

humoral tumor markers

markers

Tracer

¹²⁵I

Antigenic

monoclonal antibodies

-1-2

PSA, CEA, CA 15-3

.1

P53, Cerb B2,

-

UPA, EGFR, Cath D,

-

: -2-2

.1
.2
.3
.4
.5
.6
.7

: -3

(5).

:

.1

Z-Score

.RE

.2

.3

.4

.5

: -4

: P.S.A. total : 1-4

RIA -4	Elecsys -1
Mini Vedas -5	LIAISON -2
Axsym -6	Vidas -3

: P.S.A. free : 2-4

Axsym -3	Elecsys -1
Mini Vedas -4	Immulite -2

: -5

: -1-5

)

) (

.(

.

➤

➤

Base Pool
International

PSA (T.F)

Standard (IS)

)

(UK-NEQAS

➤

➤

-2-5

إعداد التقرير المرحلي عن نتائج البرنامج.

Z-Score

. RE

DIXON

(7 6) .

RE

$$RE = \frac{X_{th} - X_{ana}}{X_{th}} \times 100 :$$

X_{ana}

X_{th} :

(8) :

%20

(Aceptable) A

%20

%30

(Acceptable with Warning) W

%30

(Not acceptable) N

-3-5

-6 :

- 1-6

#	المحافظة	اسم المخبر	مدير المخبر
1			.
2			.
3			.
4			.
5			.
6			.
7			.
8			.
9			.
10			.
11			.
12			.
13			.
14			.
15			.
16			.
17			.

ملاحظة: تم إلغاء أسماء وعناوين المخابر التي لم تشارك في هذه الدورة.

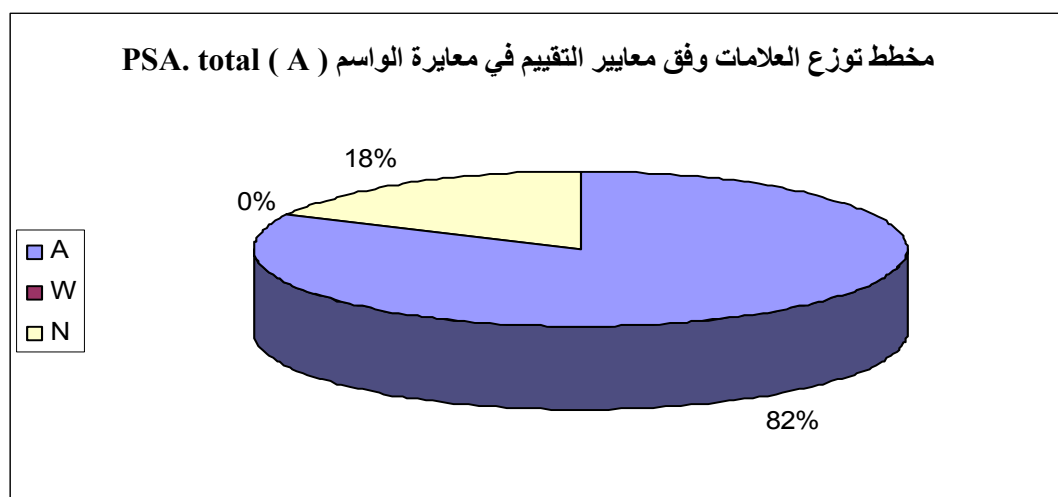
(A)

(A) PSA .total

		3.00 = ng /mL
0.75	2.22	
0.47	2.48	

A	2.38	1140
A	2.27	1003
A	2.25	1317
A	2.44	1333
A	2.82	1010
N	0.07	*1070
A	2.30	1252
A	2.13	1283
A	2.15	1067
A	2.4	1286
N	3.96	2240
A	2.42	3069
A	2.24	3152
A	2.33	3209
A	2.15	4154
A	2.90	4171

*

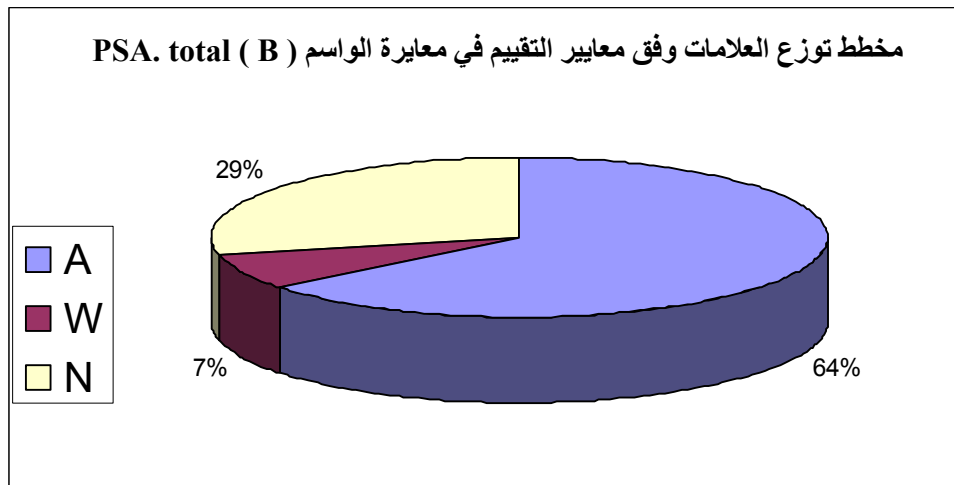


(B) PSA .total

		10.00 = ng /mL
3.40	8.35	
1.04	9.36	

W	7.07	1140
A	9.15	1003
N	2.42	*1333
N	4.92	*1010
A	10.40	1252
A	9.50	1283
A	8.82	1067
A	8.85	1286
N	16.82	*2240
A	9.81	3069
A	9.59	3152
A	9.38	3209
N	4.56	*4154
A	10.98	4171

*



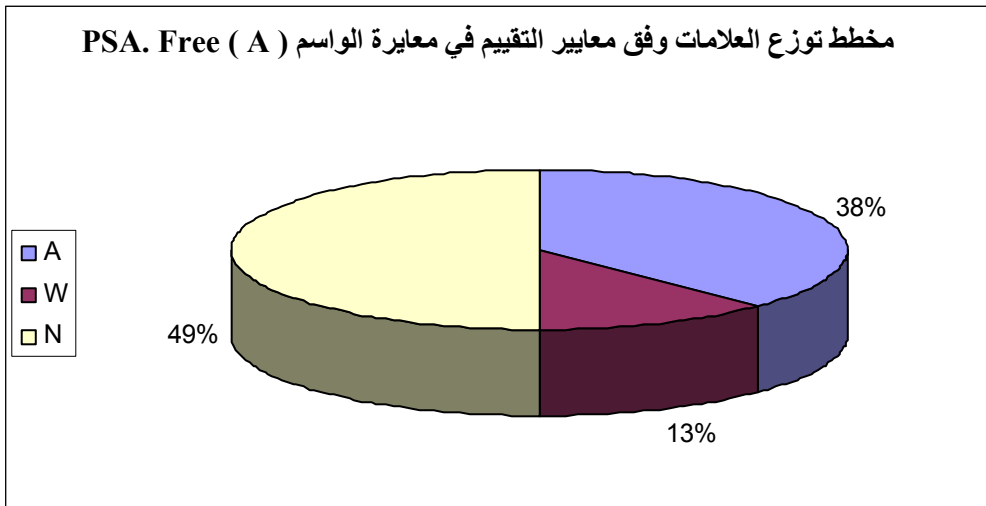
(A) PSA .free

		2.4 = ng /mL
4.80	4.64	
0.57	1.88	

N	3.08	*1140
N	11.57	*1010
N	13.1	*1070
A	1.80	1252
A	1.838	1067
N	2.8	1286
A	1.63	2240
W	1.32	4171

*

مخطط توزيع العلامات وفق معايير التقييم في معايرة الواسم (A) PSA. Free

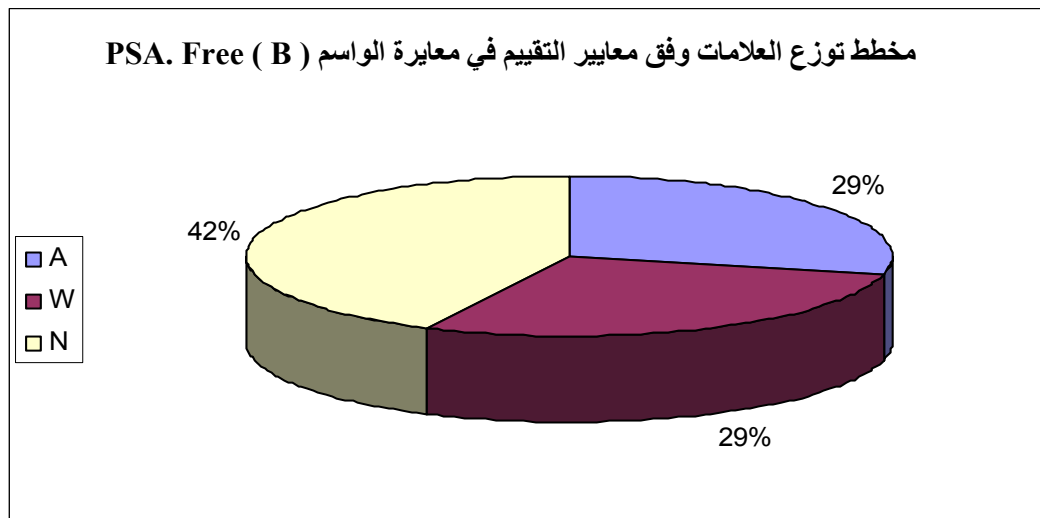


(B) PSA .free

		9.1 = ng /mL
3.91	9.30	
2.28	9.36	

A	10.8	1140
N	16.35	*1010
N	5.85	*1252
A	8.455	1067
W	11.6	1286
W	6.6	2240
N	5.46	*4171

*



(B)

(1140)

PSA . total (ng/ mL)			
A	2.38	3.00	A
W	7.07	10.00	B

PSA . free (ng/ mL)			
N	3.08	2.4	A
A	10.8	9.1	B

(1003)

PSA . total (ng/ mL)			
A	2.27	3.00	A
A	9.15	10.00	B

PSA . free (ng/ mL)			
-		2.4	A
		9.1	B

(A) Acceptable

(W) Acceptable with warning

(N) Not Acceptable

(1317)

PSA . total (ng/ mL)			
A	2.25	3.00	A
-	-	10.00	B

PSA . free (ng/ mL)			
		2.4	A
		9.1	B

(1333)

PSA . total (ng/ mL)			
A	2.44	3.00	A
N	2.42	10.00	B

PSA . free (ng/ mL)			
		2.4	A
		9.1	B

(A) Acceptable

(W) Acceptable with warning

(N) Not Acceptable

(1010)

PSA . total (ng/ mL)			
A	2.82	3.00	A
N	4.92	10.00	B

PSA . free (ng/ mL)			
N	11.57	2.4	A
N	16.35	9.1	B

(1070)

PSA . total (ng/ mL)			
N	0.07	3.00	A
	-	10.00	B

PSA . free (ng/ mL)			
N	13.1	2.4	A
	-	9.1	B

(A) Acceptable

(W) Acceptable with warning

(N) Not Acceptable

(1252)

PSA . total (ng/ mL)			
A	2.30	3.00	A
A	10.40	10.00	B

PSA . free (ng/ mL)			
A	1.80	2.4	A
N	5.85	9.1	B

(1283)

PSA . total (ng/ mL)			
A	2.13	3.00	A
A	9.50	10.00	B

PSA . free (ng/ mL)			
-		2.4	A
		9.1	B

(A) Acceptable

(W) Acceptable with warning

(N) Not Acceptable

(1067)

PSA . total (ng/ mL)			
A	2.15	3.00	A
A	8.82	10.00	B

PSA . free (ng/ mL)			
A	1.838	2.4	A
A	8.455	9.1	B

(1286)

PSA . total (ng/ mL)			
A	2.4	3.00	A
A	8.85	10.00	B

PSA . free (ng/ mL)			
N	2.8	2.4	A
W	11.6	9.1	B

(A) Acceptable

(W) Acceptable with warning

(N) Not Acceptable

(2240)

PSA . total (ng/ mL)			
N	3.96	3.00	A
N	16.82	10.00	B

PSA . free (ng/ mL)			
A	1.63	2.4	A
W	6.6	9.1	B

(3069)

PSA . total (ng/ mL)			
A	2.42	3.00	A
A	9.81	10.00	B

PSA . free (ng/ mL)			
-		2.4	A
		9.1	B

(A) Acceptable

(W) Acceptable with warning

(N) Not Acceptable

(3152)

PSA . total (ng/ mL)			
A	2.24	3.00	A
A	9.59	10.00	B

PSA . free (ng/ mL)			
-		2.4	A
		9.1	B

(3209)

PSA . total (ng/ mL)			
A	2.33	3.00	A
A	9.38	10.00	B

PSA . free (ng/ mL)			
-		2.4	A
		9.1	B

(A) Acceptable

(W) Acceptable with warning

(N) Not Acceptable

(4154)

PSA . total (ng/ mL)			
A	2.15	3.00	A
N	4.56	10.00	B

PSA . free (ng/ mL)			
		2.4	A
	-	9.1	B

(4171)

PSA . total (ng/ mL)			
A	2.90	3.00	A
A	10.98	10.00	B

PSA . free (ng/ mL)			
N	1.32	2.4	A
N	5.46	9.1	B

(A) Acceptable

(W) Acceptable with warning

(N) Not Acceptable

(D)

RF (Histogram)

